



THE SMART-SOLUTION TO TEMPERATURE TRACKING



 WHATSAPP

TempBee

The temperature in 'Cafe Front Shelf' has
dropped to 3.3°C



Modern Food Manufacturing

Most of the food that we get packaged today go through modern manufacturing processes that ensure fast production, consistent quality, and compliance. Having an additional layer of checks and balances in these industries gives some companies the edge over their competitors. We call them **Food-tech 2.0** companies.



How could we help in your journey to a Food-tech 2.0 company?

Read on to find out!



CCPs On Your Fingertips

What if you could monitor, act, and audit the temperature CCPs across your food-processing steps from anywhere in the world?

Factory storage



In transit



Freezer storage



Shopfront



“We offer comprehensive Critical Control Point (CCP) monitoring solutions across your entire value chain, accessible from any device, anywhere in the world, available round the clock”.



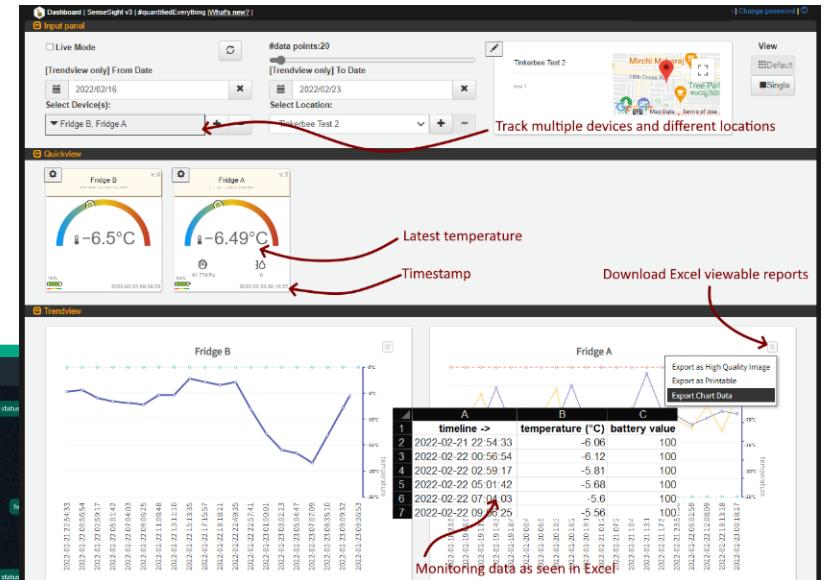
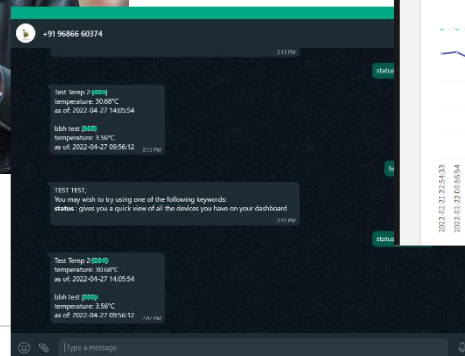
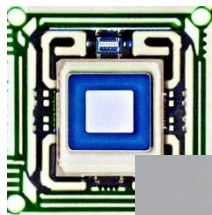
Smart Digital Wireless Sensors

Deploy smart digital sensors that can accurately and periodically sense changes in **temperature** and humidity and present low calibration drift over long periods of time.

And more importantly, transmit this information **wirelessly**. So that you could access these CCPs anywhere in the world, at any time and over multiple interfaces including messaging platforms like **WhatsApp™**!

Get alerts in near-real-time and audit reports to analyse past performance powered by our AWS cloud hosted subscription service. All with just a few clicks.










Presenting **TempBee®**



TempBee® Ordering Information

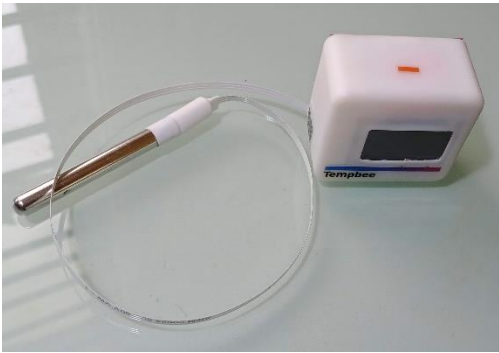
Mix and match various sensor and deployment options as shown below:

All online functionality including access to the dashboard and messaging alerts are subject to monthly/ annual subscription to these services.

Sensor (S)	Power (P)	Display (D)	Wireless (W)
<ul style="list-style-type: none">A. Temperature only. Maxim Integrated Products, Inc (USA) -55°C to +125°CB. Temperature + Humidity Sensirion AG, (Switzerland) -40°C to +125°C RH: 0 to 100% NIST calibration and traceabilityC. Other sensor(s) On-demand integration	<ul style="list-style-type: none">A. Micro-USB 5V Use standard AC line voltage powered power supply.B. Micro-USB 5V + Li-Po cellC. AA cell powered.D. 12V DCE. Other power source On-demand customization	<ul style="list-style-type: none">A. OLED monochrome display 0.96"B. TFT LCD color display 2.0"C. LCD display BW 2.0"D. No displayE. Other display On-demand customization	<ul style="list-style-type: none">A. WiFi 2.4 GHz Standard WiFi access required. ~100m range.B. LoRaWAN Long range ISM band wireless 15Km LoS range.C. Other wireless On-demand customization
 	  	 	 



TempBee® SA-PA-DA-WA



Sensor: Temperature Only
Power: 5V micro-USB
Display: 0.96" OLED
Wireless: WiFi

TempBee® SA-PB-DD-WA



Sensor: Temperature Only
Power: 5V micro-USB, 18650 Li-Ion Cell
Display: None
Wireless: WiFi



TempBee® SA-PC-DC-WB



Sensor: Temperature Only
Power: AA x 2 Alkaline Cells
Display: LCD BW
Wireless: LoRaWAN™

TempBee® SB-PA-DC-WB



Sensor: Temperature and Humidity
Power: 5V micro-USB
Display: OLED, 0.96"
Wireless: WiFi



For More Information

Please reach out to us through any of the following channels to know more about TempBee® or to discuss how our smart sensors could transform your business!



Website



tinkerbee.in/tempbee



YouTube



<https://youtu.be/YGBGfdm-TA0>



WhatsApp



+919353643915



Email



info@tinkerbee.in

(Please scan these QR codes using your mobile devices to directly access these options)



About us

At Tinkerbee, we make smart sensors, actuators, low-power micro computing devices, advanced wireless networks, and cloud infrastructure work for you.

End-to-end solutions that measure, analyse, take actions, and present actionable insights. So that you get to spend your time on what really matters. We exist to **#maximizeYourLife**.

 <https://tinkerbee.in>

 https://twitter.com/tinkerbee_in/

 <https://www.linkedin.com/company/13737530/admin/>

Government of India, Ministry of Communication, Department of Telecommunications
M2M Service Provider for providing M2M services

Registration No:KTK/MW/100006/0722

[Stock image courtesy: pixabay.com, rawpixels.com]



Support

Tinkerbee provides documentation/ video guides, 24x7 email and WhatsApp™ messaging support for all its subscribers and devices for help with installation, onboarding, configuration, and account management. There is an integrated ticketing system on the online dashboard app that enables the customer to raise a ticket on any of his/ her devices and track them in real-time. Our endeavour is to provide a **24-hour** turnaround on any issue raised!

Depending on the scale of deployments, Tinkerbee may enter into agreements with regional partner entities from time to time who could provide additional sales channels, support options, and special services on a cost-basis and pursuant to specific agreements and SLAs.

Warranty

Tinkerbee warrants its product(s) to be free from defects in material and workmanship, for a period of one year from the date of shipment.

In no event shall Tinkerbee be liable or have any responsibility under such warranty if the product(s) has been improperly stored, installed, used or maintained, or if any unauthorized modifications, adjustments and/or repairs were done to such product(s).

Tinkerbee's obligation hereunder is limited solely to repairing or replacing (at its opinion), at the factory any product(s), or parts thereof, which are proven to Tinkerbee's satisfaction to be defective as a result of defective materials, or workmanship and within the period of time, in accordance with the stated product warranty, provided, however, that written notice of claimed defects shall have been given to Tinkerbee within thirty (30) days from the date of any such defect is first discovered. The product(s) claimed to be defective must be returned to Tinkerbee, transportation prepaid by Buyer, with written specification of the claimed defect. Evidence acceptable to Seller must be furnished that the claimed defects were not caused by misuse, abuse, or neglect by anyone other than Tinkerbee.

Tinkerbee will return ship all warranty repairs or replacements at no cost to the customer. Any VAT or local country taxes are the responsibility of the owner of the product.

The foregoing warranty is in lieu of all other warranties (except as Title), whether expressed or implied, including without limitation, any warranty of merchantability, or of fitness for any particular purpose, other than as expressly set forth and to the extent specified herein, and is in lieu of all other obligations or liabilities on the part of Seller.


Tinkerbee's maximum liability with respect to these terms and conditions and any resulting sale, arising from any cause whatsoever, including without limitation, breach of contract or negligence, shall not exceed the price specified of the product(s) giving rise to the claim, and in no event shall Tinkerbee be liable under this warranty otherwise for special, incidental or consequential damages, whether similar or dissimilar, of any nature arising or resulting from the purchase, installation, removal, repair, operation, use or breakdown of the product(s) or any other cause whatsoever, including negligence.

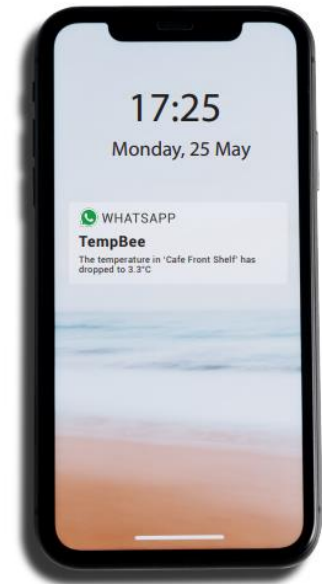






A WIRELESS SMART-THERMOMETER CONNECTED ALL THE WAY TO

YOUR PHONE 



© tinkerbee.in

