



Tinkerbee
Innovations
Bangalore | India

SPECIFICATIONS

- Can drive **12V/ 24V LED** strips and up to **2.5A** current
- Completely silent operation; no clicks or mechanical switch movements
- 56mOhm digital output switch
- Reverse polarity protection on input

SAFETY FEATURES

- Output thermal shutdown at 135°C
- Over-current shutdown at 2.7A to 4A
- Shutdown on output short-circuit
- Clamping Voltage of 34 V at 27-A, 8/20- μ s surge current
- Under-voltage lockout at 4.8V
- IEC61000-4-5 (8/20 μ s): 27 A
- IEC61643-321 (10/1000 μ s): 3.5 A
- Level 4 IEC 61000-4-2 ESD Protection

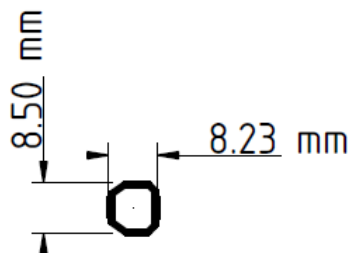
SwitchBee™ MAGSENSE



- World's first fully concealed switch for cabinet LED lighting
- Designed and Made in India
- Fully-digital magnet activated switch with 10-year replacement warranty
- Neodymium magnet activator that lasts for over 100 years
- Best quality 2-core tin-coated copper wires

Ultra small

Entire switch fits into a Φ 9mm drill hole along the section of plyboard used for cabinets



Demo Video

youtu.be/gs_TXw380U4



Contact

anupam@tinkerbee.in | +91 98116 79157

logesh.kc@tinkerbee.in | +91 98450 81132

tinkerbee.in

